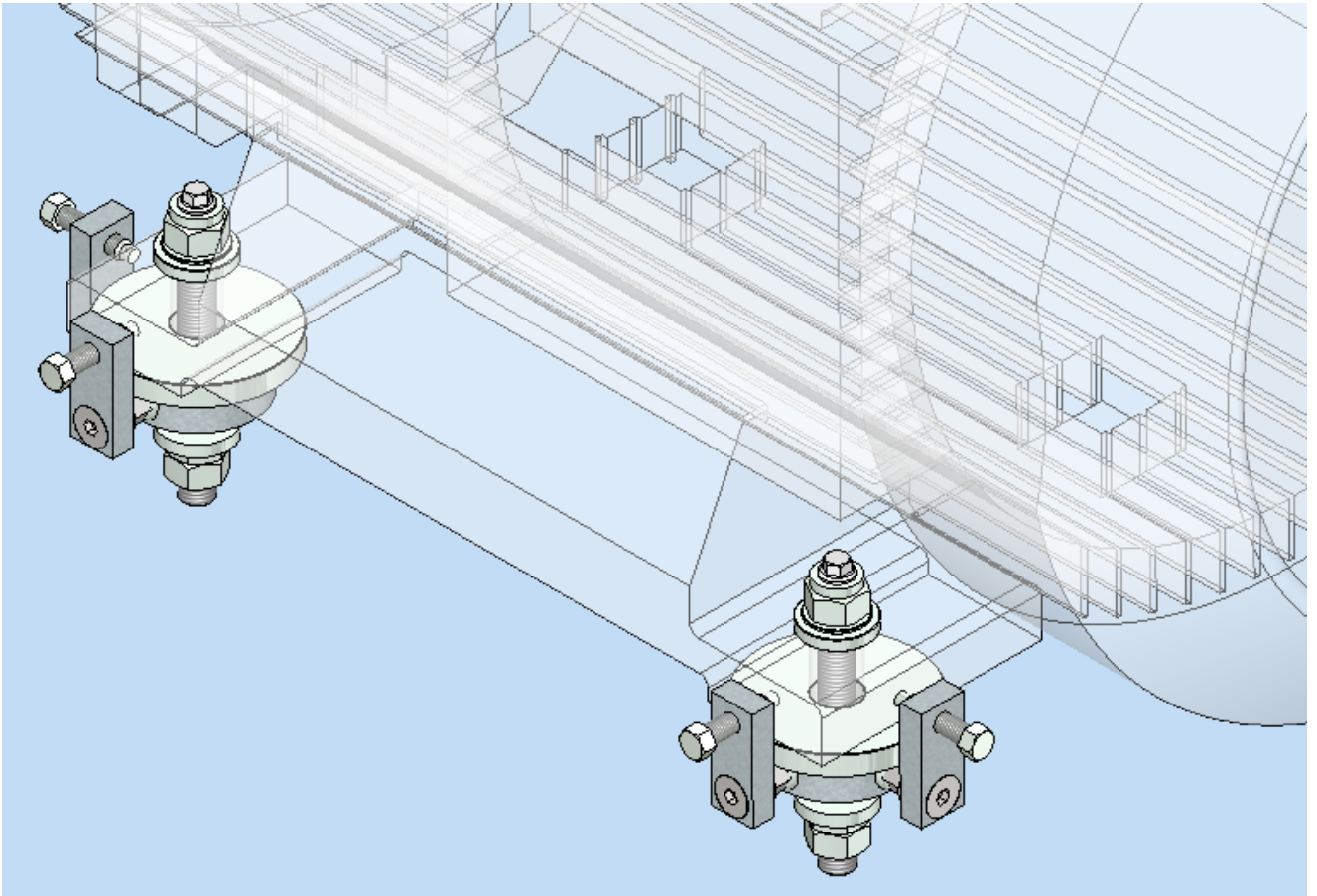
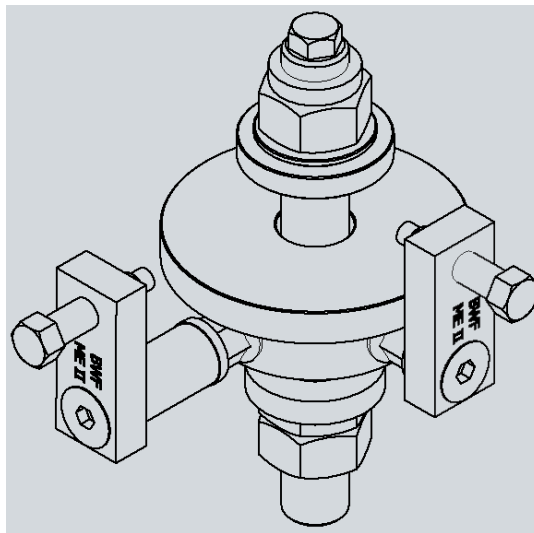
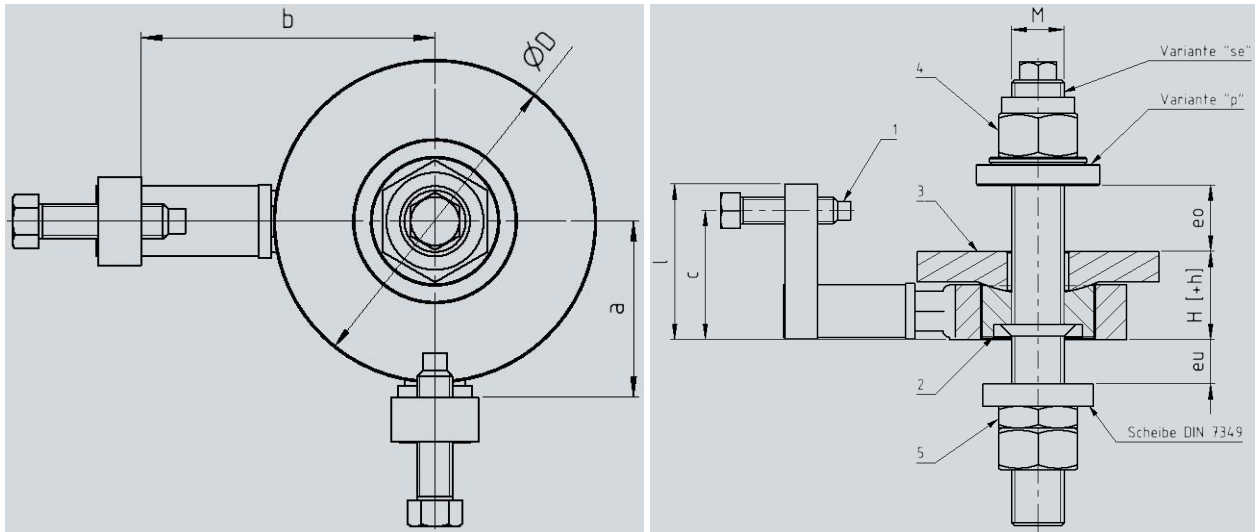


BW-Fixatoren®

Series ME



Dimensions Basic Unit [GA.axx.bxx]



Example order text: **MEII – GA.a60.b100.D110.p24.se24 – eo=?; eu=?**

ME	a, b	Ø D	se [M]	H [+h]	c	I
I	40	70	12; 16; 20	40 [+12]	58	70
II	60, 80 ... (+20)	70; 110; 150	16; 20; 24	40 [+12]	58	70
III	80, 100 ... (+20)	150; 210	30; 36	50 [+12]	70	85

Product description:

The BW-Fixator® ME consists of a threaded ring with two vertical angles offset by 90° and pressure screws for horizontal alignment (1), a load-bearing screw element including the adjustment and clamping screw

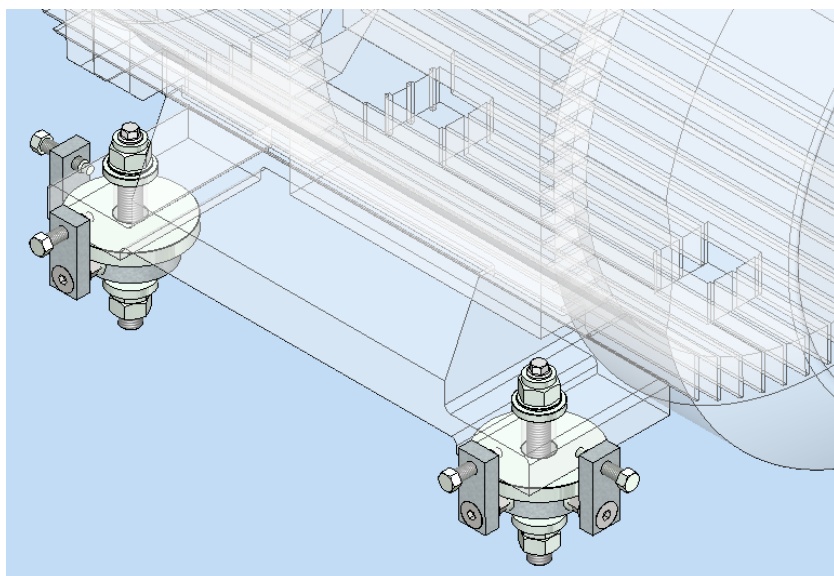
welded to it for vertical adjustment (2), and a spherical bearing plate (3). Supplied as standard with a lock nut (4) and counter nut (5). The BW-Fixator® ME is generally mounted on a steel base frame.

Technical Data Series ME

Size	Dim	ME I / II			ME II	ME III	
Adjusting screw		M12	M16	M20	M24	M30	M36
Max. permissible adjustment load	kN	8	20	30	40	50	60
Max. permissible adjustment torque	Nm	40	100	150	200	400	450
Max. permissible tightening torque	Nm	55	140	270	450	900	1600
Vertical adjustment per screw turn		all sizes 1 mm					

Size	Dim	ME I	ME II	ME III
Horizontal pressure screw		M12	M12	M16
Max. permissible torque	Nm	35	35	60

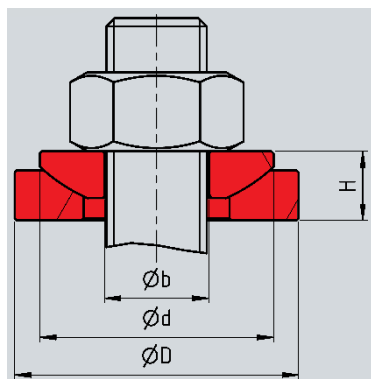
Machine alignment



1. Lower the motor or machine upon the BW-FIXATOR®.
2. Align the machine vertically in a neutral position (without tightening the hexagon nut on the clamping screw).
3. Lock the tensioning screw against the frame of the system using the lower hexagon nut.
4. Align the machine using the horizontal pressure screws.
5. Tighten the machine using the upper hexagon nut of the clamping screw.
6. Check the result of the alignment process.

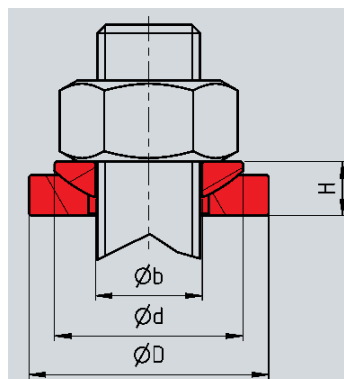
Accessory

p Spherical washer set for non-parallel bearing surfaces



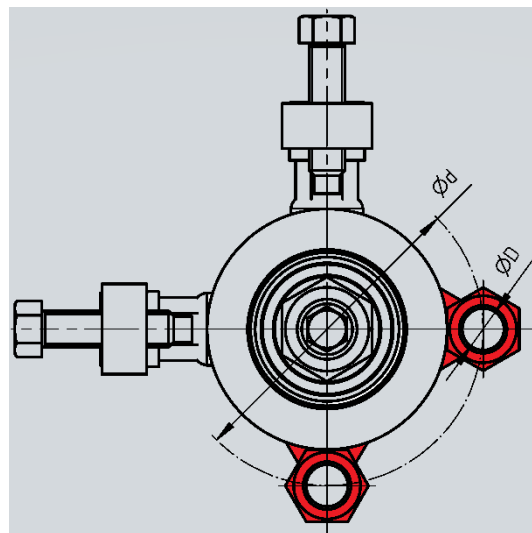
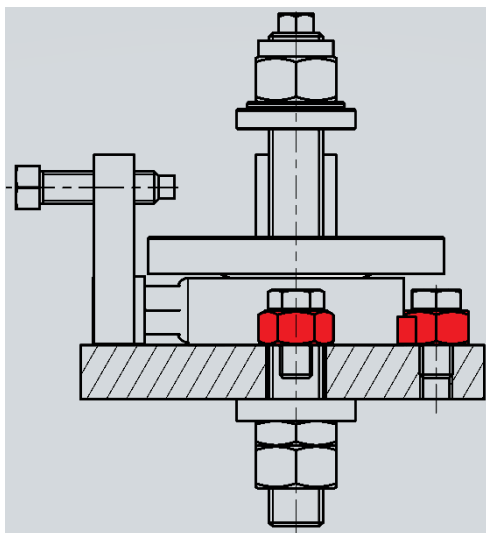
ME	ØD	H	Ød	Øb
p-M12	40	9	30	13
p-M16	40	9	30	17
p-M20	44	10	36	21
p-M24	56	13	44	25
p-M30	68	16	56	31
p-M36	78	20	37	37

r Large spherical washer set for non-parallel bearing surfaces



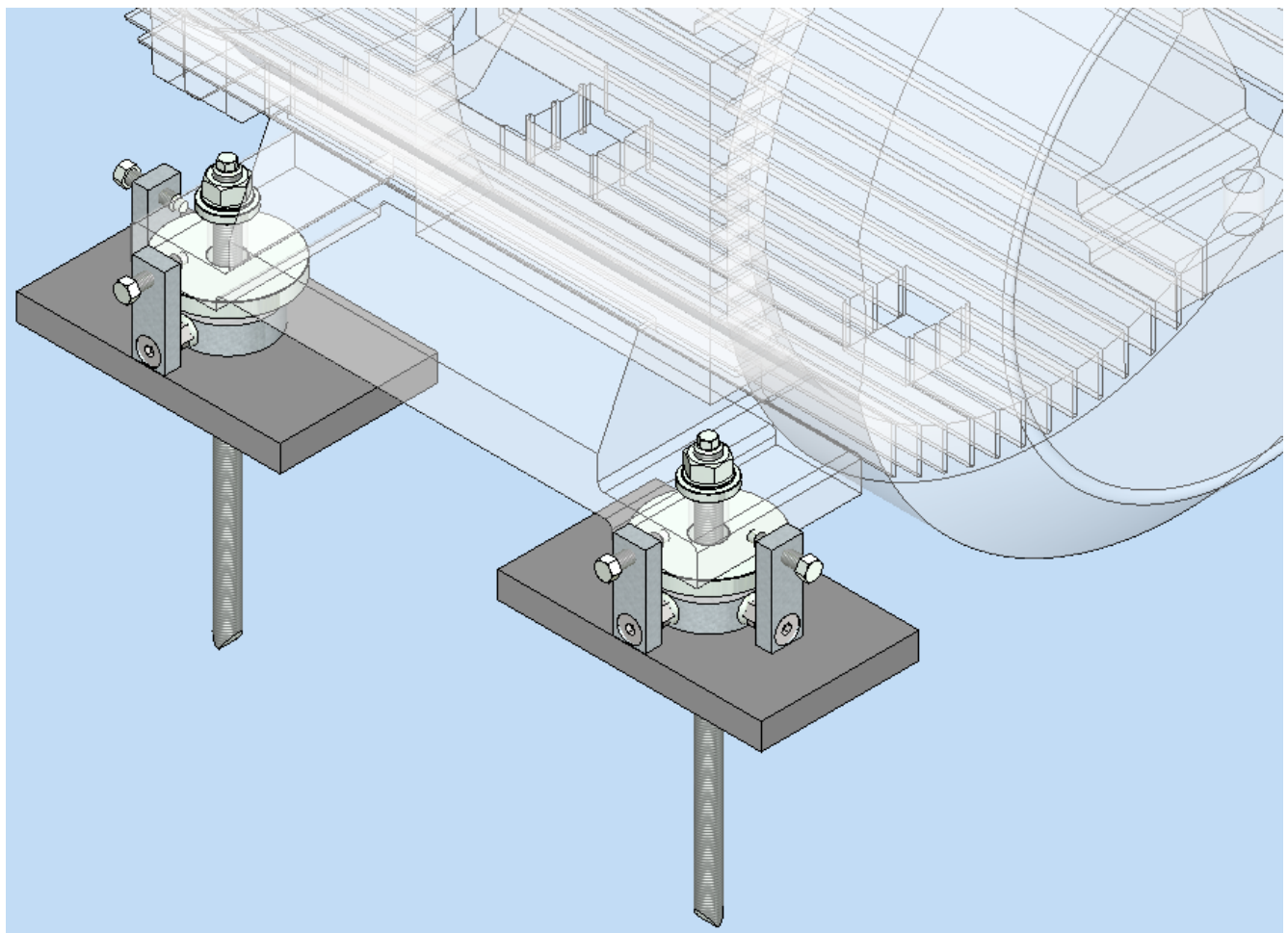
ME	ØD	H	Ød	Øb
r-M16	44	10	36	17
r-M20	56	13	44	21
r-M24	68	16	56	25
r-M30	80	16	56	31
r-M36	100	20	68	37

zbf Additional mounting option

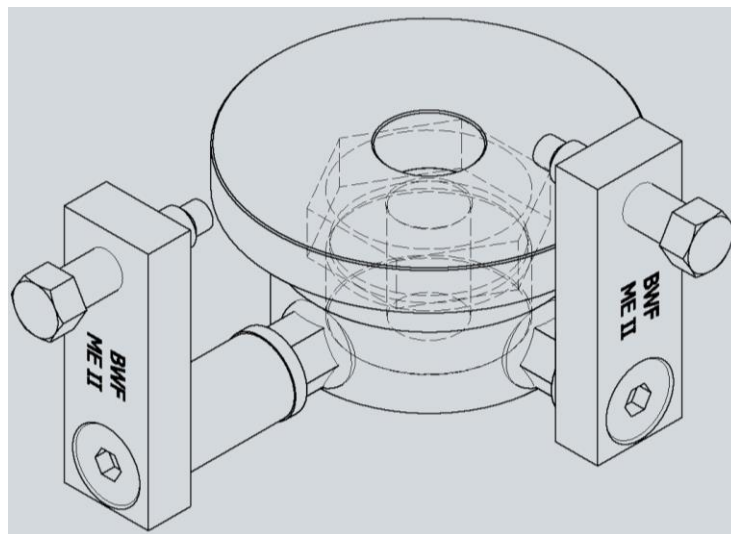
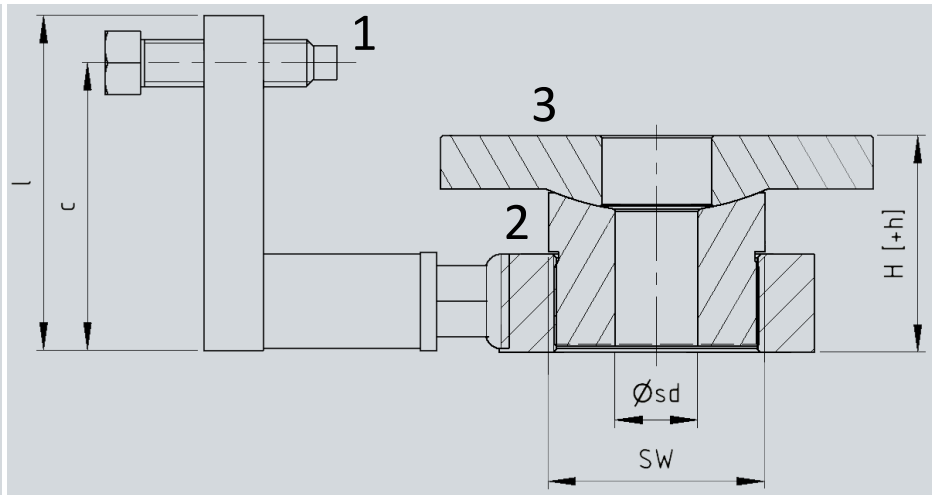
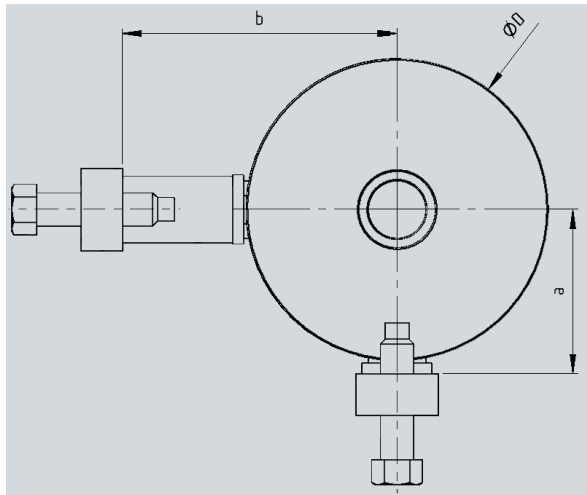


ME	ØD	Ød
I	14	104
II	14	104
III	17	140

Series ME bolt-through



Dimensions Basic Unit bolt-through [GA.adxx.bdxx]



Example order text: **MEII – GA.ad60.bd100.D110.sd20**

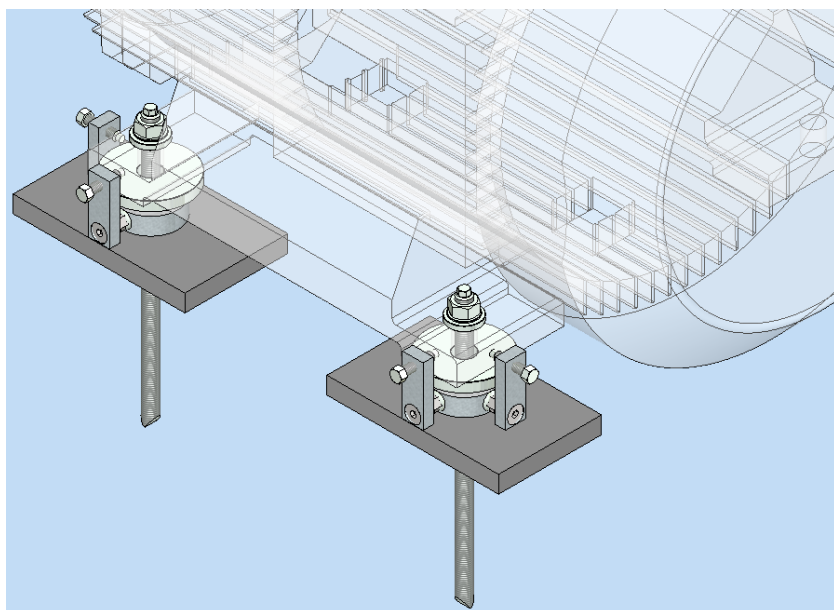
ME	ad, bd	Ø D	Ø sd	H [+h]	c	l	SW
II	60, 80 ... (+20)	70; 110; 150	17; 21; 25	55 [+12]	73	85	55
III	80, 100 ... (+20)	150; 210	31; 37	75 [+12]	95	110	85

Product description:

The BW-Fixator® ME variant bolt-through consists of a threaded ring with two vertical angles offset by 90° and pressure screws for horizontal alignment (1), a load-bearing screw element with a hexagon head for height

adjustment (2), and a spherical bearing plate (3). The variant bolt-through can be supplied with two types of foundation anchoring and is generally mounted on the machine foundation.

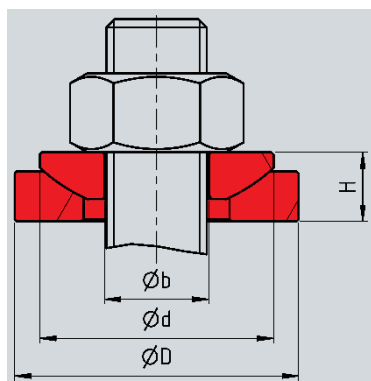
Machine alignment bolt-through



1. Lower the motor or machine upon the pre-aligned BW-FIXATOR® with fixed foundation anchor.
2. Align the machine vertically in a neutral position (without tightening the hexagon nut of the foundation anchor).
3. Align the machine using the horizontal pressure screws.
4. Tighten the machine using the hexagon nut of the foundation anchor.
5. Check the result of the alignment process.

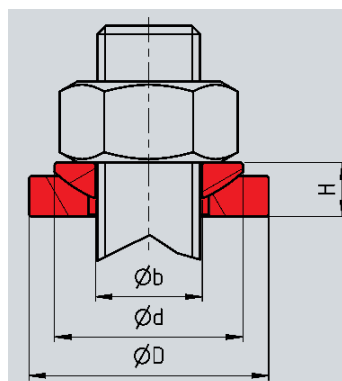
Accessory

p Spherical washer set for non-parallel bearing surfaces



ME	ØD	H	Ød	Øb
p-M12	40	9	30	13
p-M16	40	9	30	17
p-M20	44	10	36	21
p-M24	56	13	44	25
p-M30	68	16	56	31
p-M36	78	20	37	37

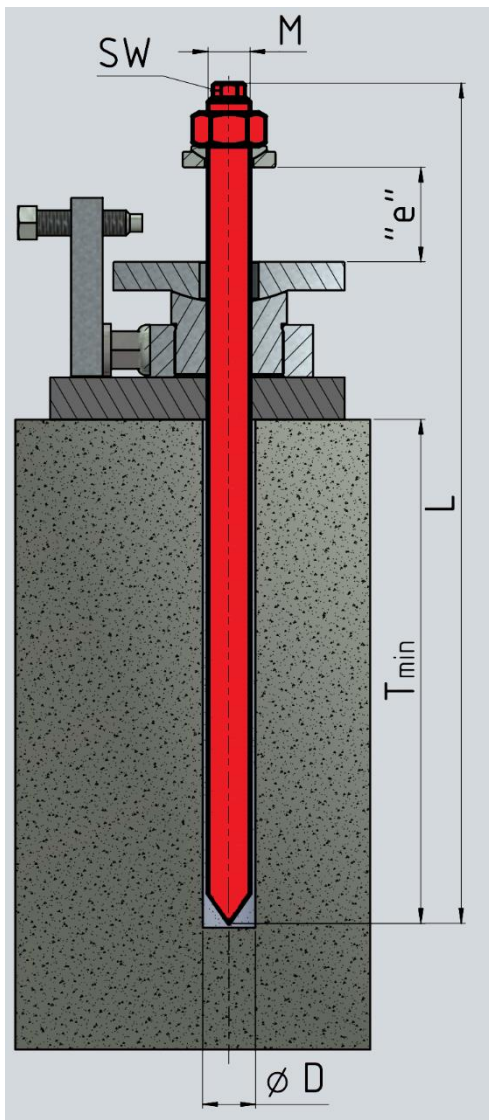
r Large spherical washer set for non-parallel bearing surfaces



ME	ØD	H	Ød	Øb
r-M16	44	10	36	17
r-M20	56	13	44	21
r-M24	68	16	56	25
r-M30	80	16	56	31
r-M36	100	20	68	37

Foundation anchoring

due Resin anchor consists of mortar cartridge and threaded rod



due

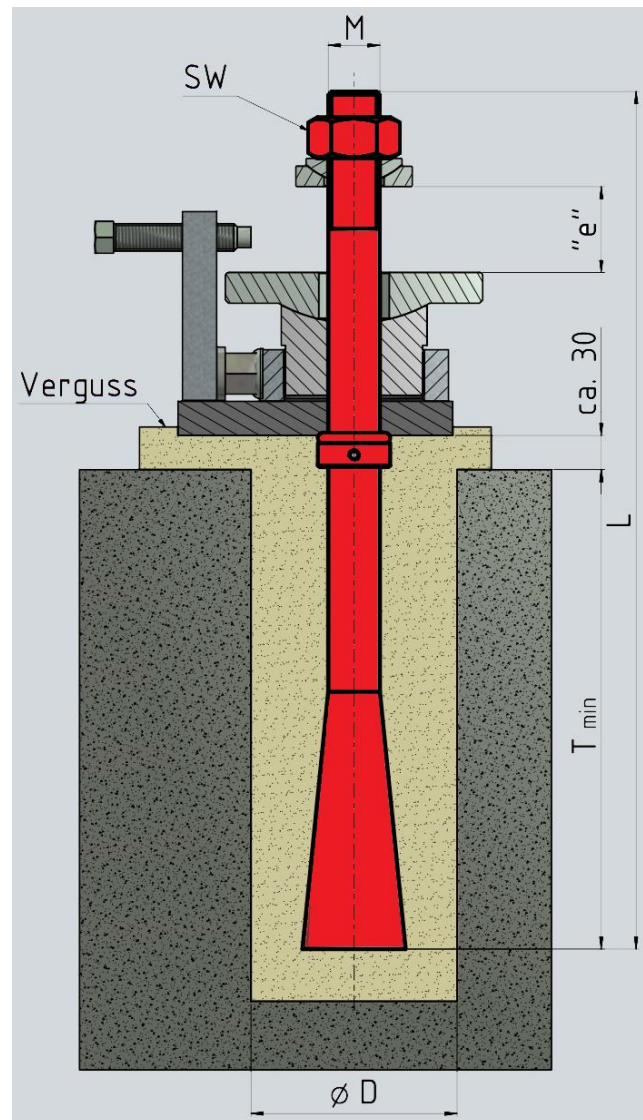
M	16	20	24
L	300	400	450
SW	10	13	17
ØD	18	25	28
T_{min}	125	170	210

Example order text:

**ME II – GA.ad60.bd60.D110.p20.sd20
due-L400**

Baseplate to be designed and provided by customer

wes Anchor bolt for direct connection of the engine to the foundation



wes-S

M	16	20	24	30	36
L	350	400	450	500	600
SW	24	30	36	46	55
ØD	70	80	100	120	150
T_{min}	130	150	215	250	310

Example order text:

**ME III – GA.ad80.bd80.D150.p30.sd30.
wes-S500**

Baseplate to be designed and provided by customer