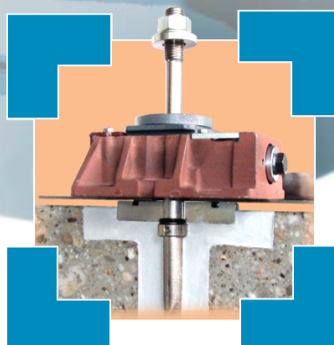


# BW-Fixators®

for machine installations  
with sheet metal oil trays  
Series RK

... for the modern  
art of machine installations  
protecting the environment

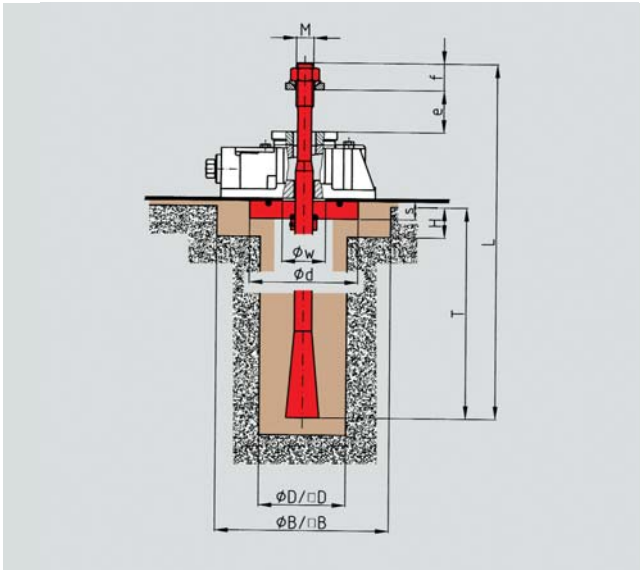
Installation Varieties and  
Technical Information



**BWF**

*...the best for accuracy.*

# Machine installation with sheet metal oil trays with Serie RK



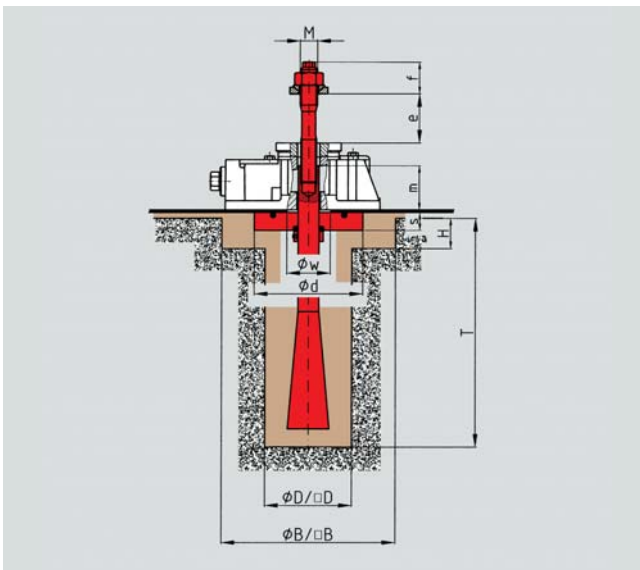
## wes-wu

Anchor bolt for direct connection of the machine to the foundation

**Note:**  
Specify the variants f1 and b and dimension „e“ (thickness of machine leg) in your order

RK	M	L	Ød	S	f	ØW	e		Foundations				Clamping force max.	Recommended machine dead weight	Permissible max. load
							from	to	H	B	D	T			
I	M16	330	125	15	30	40	20	50	40	200	70	240	53 000	10 000	90 000
II	M20	400	125	20	40	40	20	70	40	200	80	270	81 000	20 000	120 000
III	M24	500	170	25	50	45	30	90	50	250	100	340	115 000	40 000	240 000

For more technical data see catalogue RK



## wes/2-wu

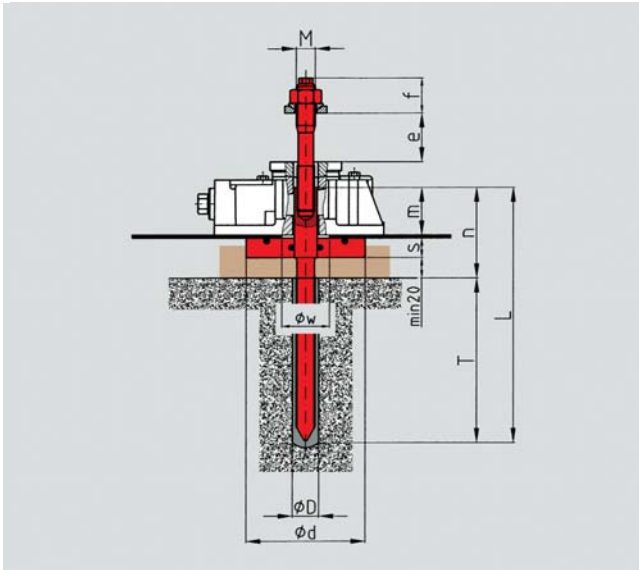
Split anchor bolt for direct connection of the machine to the foundation

**Note:**  
Specify the variants f2 and b and dimension „e“ (thickness of machine leg) in your order

RK	M	Ød	S	f	Øw	m	Foundations				Clamping force max.	Recommended machine dead weight	Permissible max. load
							H	B	D	T			
I	M16	125	15	30	40	38	40	200	80	160	53 000	10 000	90 000
II	M20	125	20	40	45	50	40	200	100	240	81 000	20 000	120 000
III	M24	170	25	50	50	61	50	250	120	320	115 000	40 000	240 000

For more technical data see catalogue RK

# Machine installation with sheet metal oil trays with Serie RK



## due/2-wu

Split resin anchor for direct connection of the machine to the foundation (Capsule and split stud)

### **Instruction for installation:**

Installing the resin anchors the measure „n” is to keep as deadline at the highest level of the foundation

### **Note:**

Specify the variants f2 and b and dimension „e” (thickness of machine leg) in your order

RK	M	L	Ød	S	f	Ø W	m	n	Foundations		Clamping force max.	Recommended machine dead weight	Permissible max. load
									D	T			
I	M16	200	125	15	30	40	38	75	18	125	15 000	10 000	90 000
II	M20	260	125	20	40	45	50	90	25	170	27 000	20 000	120 000
III	M24	290	170	25	50	50	32	80	28	210	37 000	40 000	240 000

For more technical data see catalogue RK

Fixatorenbau  
Bertuch & Co GmbH  
Siemensstraße 15  
51381 Leverkusen

Phone 02171 / 763-0  
Fax 02171 / 763-100  
e-mail: [BWF@Fixatorenbau.de](mailto:BWF@Fixatorenbau.de)  
[www.Fixatorenbau.de](http://www.Fixatorenbau.de)

