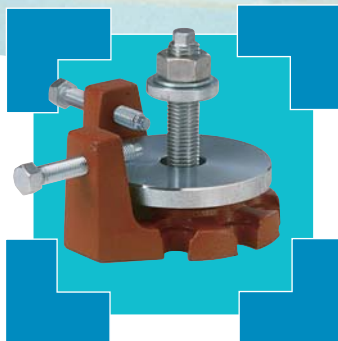


BW-Fixatoren® Series MS

... for vertical and lateral alignment and anchoring of electric motors, pumps, compressors and cooling apparatus

Installation Varieties and Technical Information

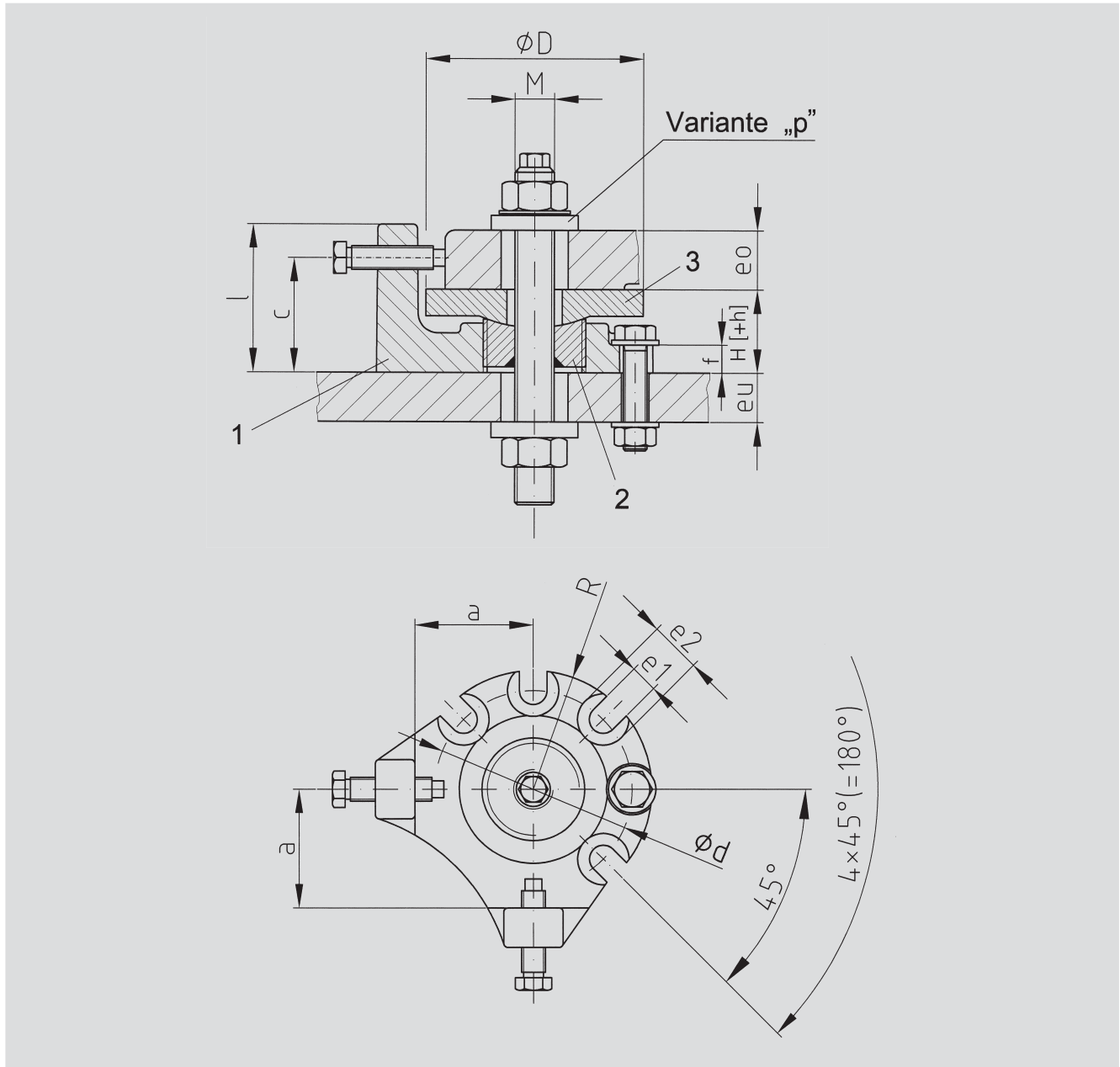


BWF

...the best for accuracy.

Dimensions of Series MS

GA Basic unit



Size	a	Ø D	H	h		M	f	l	c	Ø d	R	e1	e2	
I	40	70	40	12	12	16	20	14	68	56	85	50	12	23
II	60	110	40	12	16	20	24	14	75	58	100	60	14	26
II	80	150	40	12	16	20	24	14	75	58	100	60	14	26
III	110	210	50	12	24	30	36	14	85	70	140	80	18	32
III	150	210	50	12	24	30	36	14	85	70	140	80	18	32

Description

As shown in the above chart, the BW-Fixator® MS comes in five sizes. The vertical alignment is accomplished from the top with a threaded element. It has two lateral adjusters providing positive horizontal positioning.

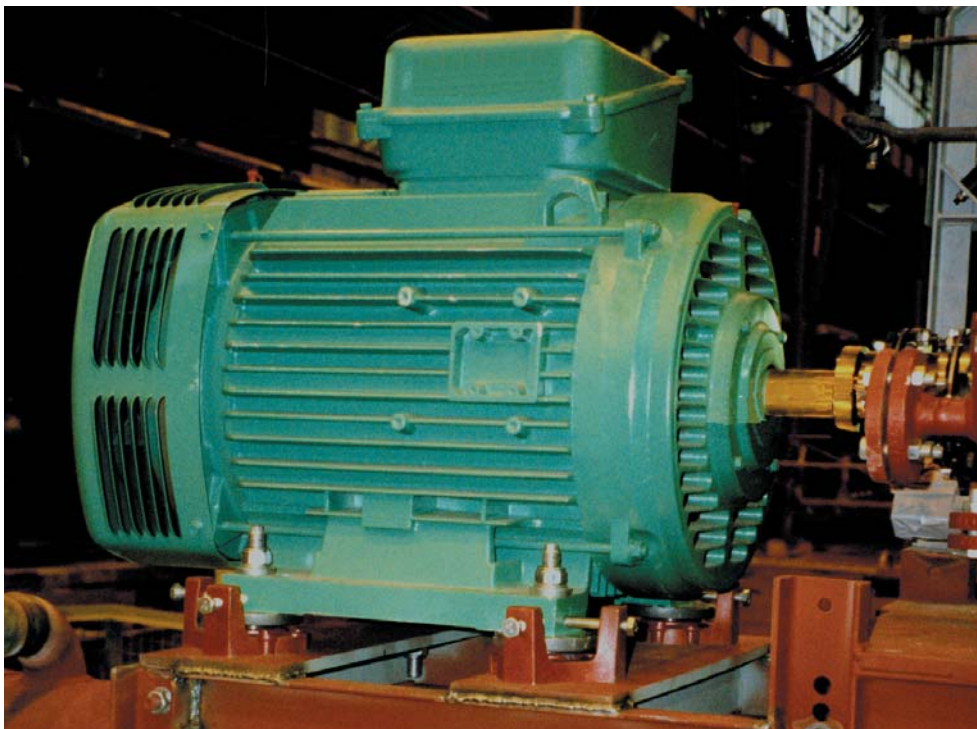
To ensure positive support the bearing plate incorporates a spherical seat. Normally the BW-Fixator® MS will be fastened to a steel base frame. It can also be adapted to concrete pedestal installations.

Technical Data of Series MS

Size	Dim	MS I/II			MS II	MS III		
Vertical levelling screw		M12	M16	M20	M24	M24	M30	M36
Permissible maximum lifting load	kN	8	20	30	40	40	50	60
Max. torque at levelling screw	Nm	40	100	150	200	300	400	450
Max. torque at the nut	Nm	55	140	270	450	450	900	1600
Vertical adjustment per screw turn		all sizes 1 mm						

Size	Dim	MS I	MS II	MS III
Lateral levelling screw		M10	M12	M16
Max. torque	Nm	25	35	60
Permissible max. adjusting load	kN	18	22	26

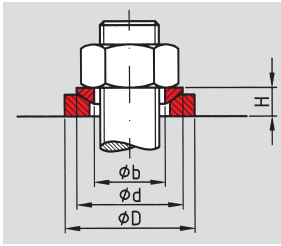
Subject to modification without notice



Alignment Procedures

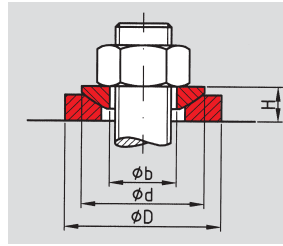
1. Lower the motor or machine onto the BW-Fixator® MS
2. Align first the vertical direction (without tightening nuts at the levelling bolt)
3. Tighten the lower nut on the anchor bolt against the base frame
4. Align the machine in the lateral direction
5. Tighten the upper nut to secure the motor or machine
6. Check the alignment

Variant



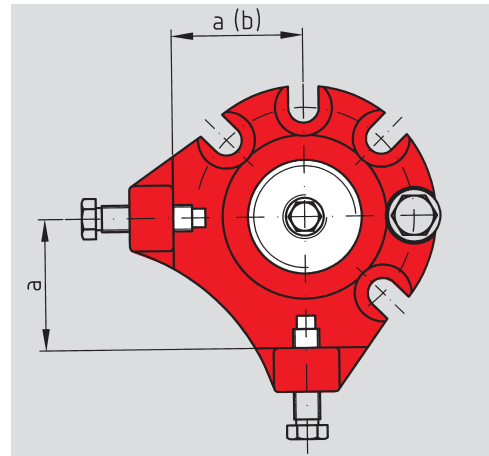
p Spherical washer set for non-parallel bearing surfaces

MS	ϕD	H	ϕd	ϕb
p-M12	40	9	30	13
p-M16	40	9	30	17
p-M20	44	10	36	21
p-M24	56	13	44	25
p-M30	68	16	56	31
p-M36	78	20	68	37



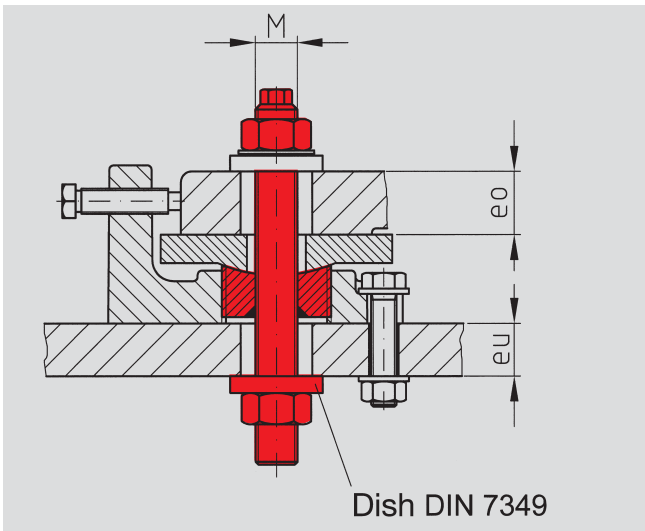
r Large spherical washer set for non-parallel bearing surfaces

MS	ϕD	H	ϕd	ϕb
r-M16	44	10	36	17
r-M20	56	13	44	21
r-M24	68	16	56	25
r-M30	80	16	56	31
r-M36	100	20	68	37



a Distance between center hole and vertical wall

MS I	MS II		MS III
a-40	a-60	a-80	a-110 a-150



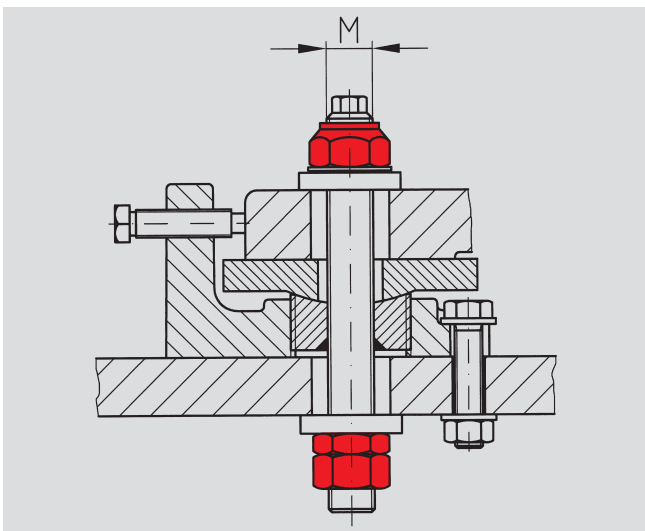
Dish DIN 7349

se

Hold-down and adjusting bolt

Size	M	
MS I	12	16 20
MS II	16	20 24
MS III	24	30 36

Note:
Specify the measures "e0 and eu" for the thickness of motor frame and base frame in your order



sm

Adjusting bolt with lock nuts

Size	M	
MS I	12	16 20
MS II	16	20 24
MS III	24	30 36

zn

Galvanized element